

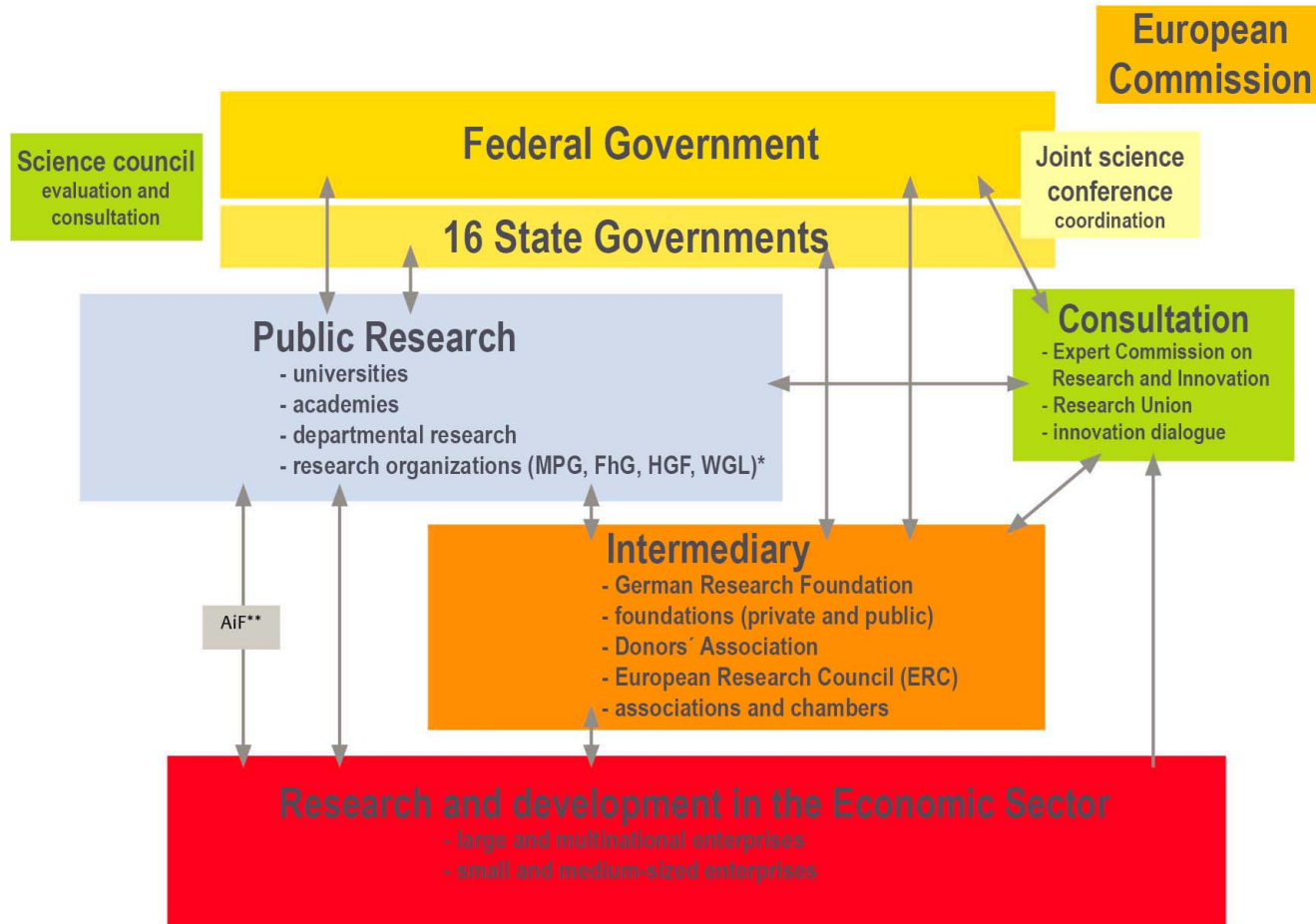
# Finding your way through our University

October 2020

## Introduction to the structure of our University



# Actors of the German research and innovation system



\* Max Planck Society for the Advancement of Science (MPG), Fraunhofer Society (FhG), Helmholtz Association of German Research Centres (HGF), Gottfried Wilhelm Leibniz Science Association (WGL)

\*\* German Federation of Industrial Cooperative Research Associations

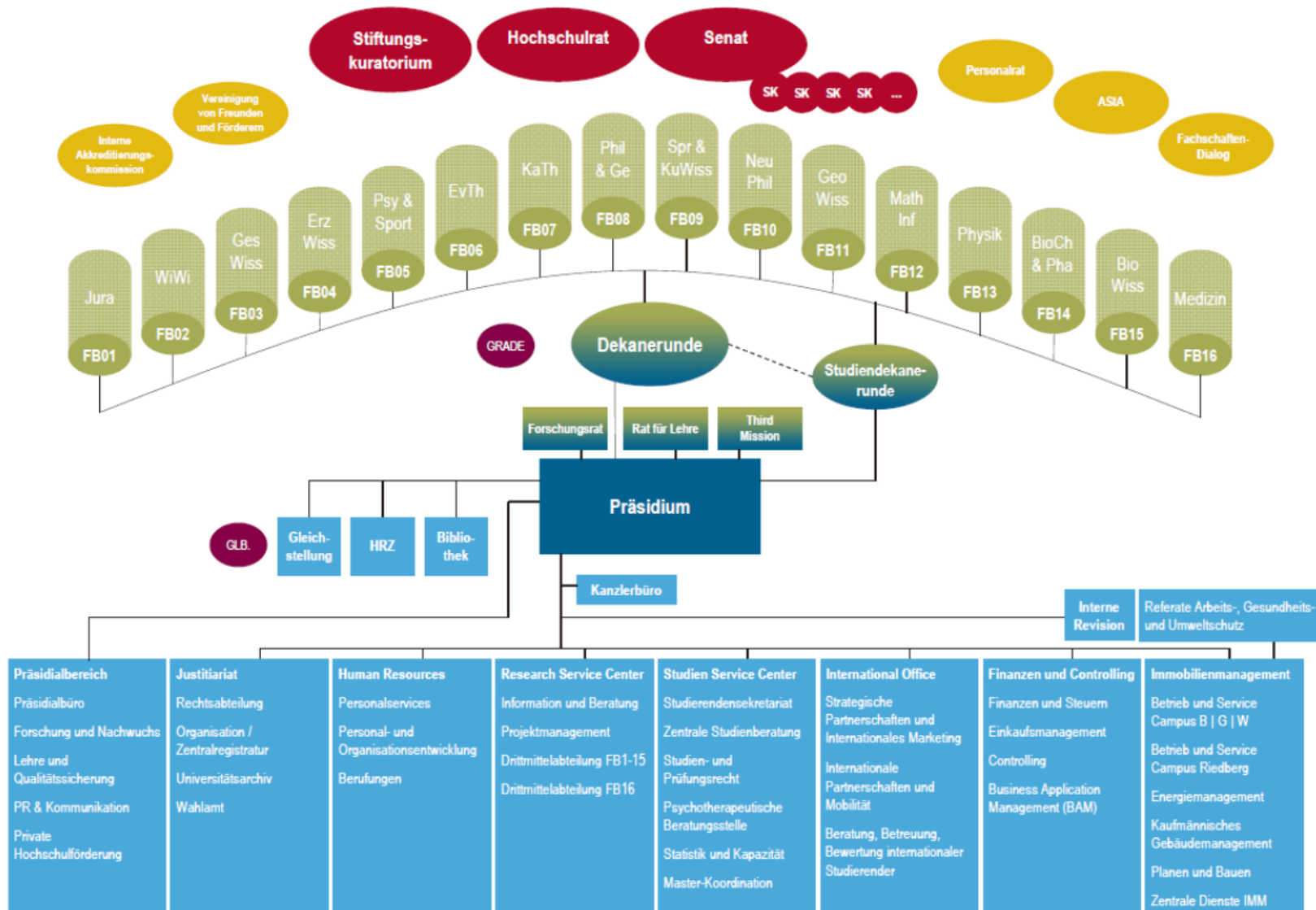
Source: BMBF Bundesbericht Forschung und Innovation 2014



# Main Focus of Research and Development Activities in Hessen and at Goethe University

Research Field	Description	Located at Goethe University
<b>Health / Life Science</b>	<ul style="list-style-type: none"> <li>• Basic and translational research for cardiovascular diseases as well as cancer and lung diseases</li> <li>• Drug Research, innovative bio-technologies (2 Excellenzcluster, 4 LOEWE-Zentren, 12 LOEWE-Schwerpunkte)</li> </ul>	<ul style="list-style-type: none"> <li>• <i>Macromolecular Complexes - Cluster of Excellence Frankfurt (CEF-MC)</i></li> <li>• <i>Excellence Cluster Cardio-Pulmonary System (ECCPS)</i></li> <li>• <i>Translationale Medizin and Pharmacology, (TMP)</i></li> </ul>
<b>Natural Sciences / Environment</b>	Climatic Change and Particle Physics ( 1 LOEWE-Zentrum, 6 LOEWE Schwerpunkte)	<ul style="list-style-type: none"> <li>• <i><u>Biodiversität und Klima (BIK-F)</u> (since 01.01.2015 Part of Senckenberg Society for Natural Research)</i></li> <li>• <i>Insektenbiotechnologie (Beteiligung, ab 2014 Weiterführung als LOEWE-Zentrum)</i></li> <li>• <i>Sensors Towards Terahertz – New Technologies for Life Sciences, Process- and Environment Monitoring</i></li> </ul>
<b>Engineering Sciences</b>	High-performance supercomputers, future of energy supply, ressource-efficient use of material, mobility	<ul style="list-style-type: none"> <li>• <i>./.</i></li> </ul>
<b>Culture / Society / Economics</b>	Normative Orders, Developmental and learning research, Conflicts, Financial market research	<ul style="list-style-type: none"> <li>• <i>Excellence Cluster Normative Orders</i></li> <li>• <i><u>Sustainable Architecture for Finance in Europe (SAFE)</u></i></li> </ul>

# Organisational Structure



# University governance units and their responsibilities

Governance Unit	Members	Responsibilities
<b>University Council</b>	11 Members, 10 non-university, 1 HMWK representative,	<ul style="list-style-type: none"> <li>• Participation in the appointment of presidium members</li> <li>• Suggestions for Study and Research Affairs</li> <li>• Supervisory body for Presidium</li> </ul>
<b>President / Executive Board</b>	President (Prof. Wolff) 4 Vice Presidents Registrar/Provost (Dr. Fester)	<ul style="list-style-type: none"> <li>• Legal head of institution</li> <li>• Facilitates the development of Goethe University</li> <li>• Budget responsibility</li> <li>• Target agreements with the state</li> </ul>
<b>Senate</b>	Executive Board plus 9 professors 3 academic staff 3 students 2 administrative-technical staff (Women's Representative, Staff Council)	<ul style="list-style-type: none"> <li>• Determines basic order</li> <li>• Advises on fundamental aspects concerning study, teaching and research</li> <li>• Monitors Executive Board</li> </ul>
<b>Dean</b>	Dean, Vice Dean, Academic Dean	<ul style="list-style-type: none"> <li>• Operational management of the Department E. G. responsibility for               <ul style="list-style-type: none"> <li>○ Appointment of professors</li> <li>○ Personnel and financial planning</li> <li>○ Academic Regulations</li> </ul> </li> </ul>

# The University Executive

## President

Prof. Wolff

### Presidents' Department

- Research
- PR & Communication
- Private University Funding
- Education and Quality Assurance

## Vice Presidents

Prof. Erb

Prof. Fulda

Prof. van Dick

Prof. Schubert-Zsilavec

Research and Infrastructure

Teaching and Studying

Infrastructure

Internationalization

Equal Opportunities Office

## Registrar/Provost

(„Kanzler“)

Dr. Fester

Legal Unit

Finances / Controlling

Real Estate Management

Student Service Center

Human Resources

International Office

Research Service Center

Staff unit for internal auditing

## Faculties

(16)

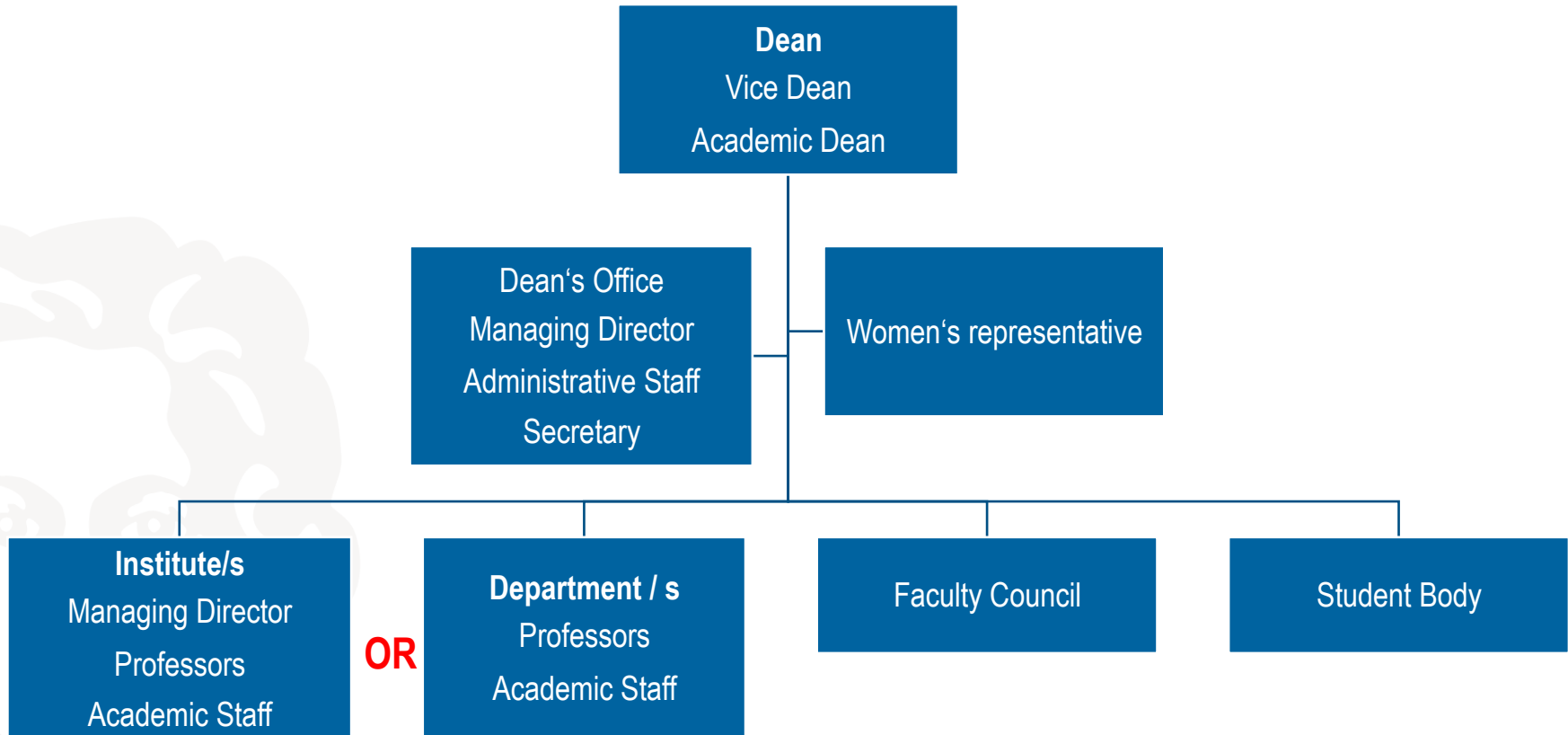
Research

Teaching

Self-administration



# Department Structure - Example



# Locations of Goethe University



**Westend Campus**



**Riedberg Campus**



**Ginnheim Campus**



**Bockenheim Campus**




**Niederrad Campus**



# Faculties at Goethe University

16 Faculties, Bachelor- and Master Programmes, doctoral studies, postdoctoral qualification  
Mission: Research and teaching



Niederrad  
16 Medicine

Ginnheim

05 Psychology &  
Sports Sciences

Bockenheim

12 Computer  
Science &  
Mathematics

09 Faculty of  
Linguistics, Cultures  
and Arts

Riedberg

11 Geosciences &  
Geography

13 Physics

14 Biochemistry,  
Chemistry & Pharmacy

15 Biological Sciences

Westend

01 Law

02 Economics & Business  
Administration

03 Social Sciences

04 Educational Sciences

05 Psychology & Sports  
Sciences

06 Protestant Theology

07 Roman Catholic Theology

08 Philosophy & History

10 Modern Philologies

# Where do I get more information?

**GOETHE UNIVERSITÄT FRANKFURT AM MAIN**

Intranet der Goethe-Universität

Suchbegriff  [GO](#)

Webmail **Intranet** Aktuelles

KONTAKT

Intranetredaktion  
Imke Folkerts  
069/798-12370  
[intranet@uni-frankfurt.de](mailto:intranet@uni-frankfurt.de)

AKTUELLES **GREMIEN / STRATEGIEN** ORGANISATION ARBEITSWELT GESUNDHEIT / FREIZEIT PUBLIKATIONEN / MEDIA

GU Home · Intranet · Gremien / Strategien

### Aus den Gremien / Strategien

#### Hochschulentwicklungsplan/ Zielvereinbarungen

- » Zielvereinbarung HMWK/Goethe-Universität
- » Entwurf Hochschulentwicklungsplan (HEP) 2016-2020 (Stand: März 2016)
- » Gliederungsentwurf HEP 2016-2020
- » Hochschulentwicklungsplan (HEP) 2011 (PDF)

#### Leitbilder

- » Leitbild der Goethe-Universität
- » Grundsätze zu Lehre und Studium

#### Senat

- » Zusammensetzung und Aufgaben des Senats
- » Mitglieder des Senats
- » Besetzung Senatskommissionen
- » Termine Senatssitzungen
- » Schriftliche Mitteilungen zu den Senatssitzungen

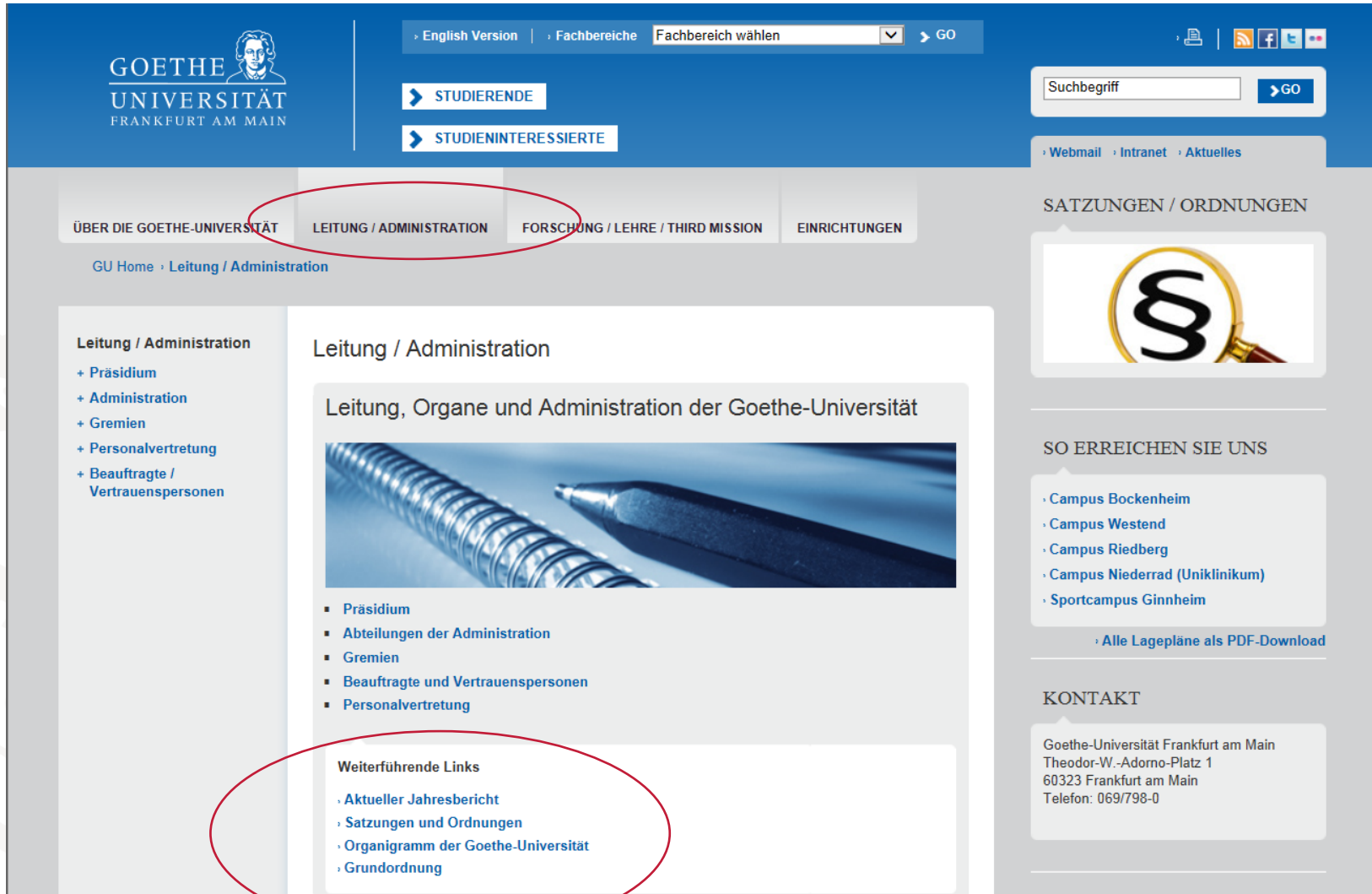
#### Dekane, Pro- und Studiendekane

- » Kontaktadressen und Amtsaufzeiten
- » Termine Dekanerunde

#### Forschungsrat

#### Early Career Researchers

# Where do I get more information?



The screenshot shows the website's navigation structure. The top navigation bar includes 'English Version', 'Fachbereiche', and a dropdown menu 'Fachbereich wählen'. Below this are buttons for 'STUDIERENDE' and 'STUDIENINTERESSIERTE'. The main navigation menu has four items: 'ÜBER DIE GOETHE-UNIVERSITÄT', 'LEITUNG / ADMINISTRATION', 'FORSCHUNG / LEHRE / THIRD MISSION', and 'EINRICHTUNGEN'. The 'LEITUNG / ADMINISTRATION' menu item is circled in red. Below the navigation, the page title is 'Leitung / Administration' and the main content area is titled 'Leitung, Organe und Administration der Goethe-Universität'. A list of links is provided: 'Präsidium', 'Abteilungen der Administration', 'Gremien', 'Beauftragte und Vertrauenspersonen', and 'Personalvertretung'. A 'Weiterführende Links' section is also circled in red, containing links to 'Aktueller Jahresbericht', 'Satzungen und Ordnungen', 'Organigramm der Goethe-Universität', and 'Grundordnung'. On the right side, there is a search bar, a 'Webmail' link, and a 'Satzungen / Ordnungen' section with a magnifying glass icon over a paragraph symbol (§). Below that is a 'SO ERREICHEN SIE UNS' section with links to various campuses and a PDF download link for all location plans. At the bottom right is a 'KONTAKT' section with the university's address and phone number.

# If you have any questions ...

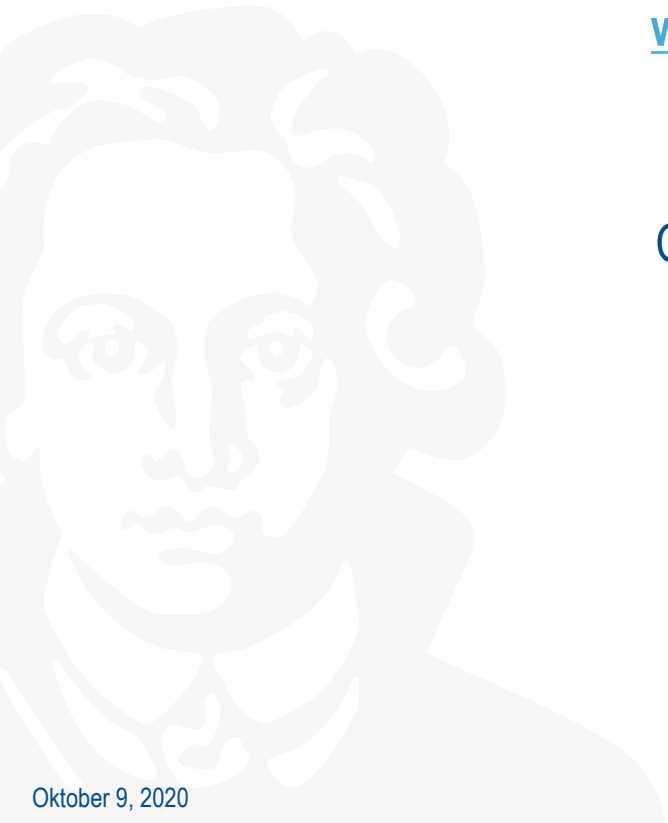
... please do not hesitate to ask:

Department of Personnel & Organizational Development

[www.uni-frankfurt.de/peoe](http://www.uni-frankfurt.de/peoe)

Ms Clara Cornel

Cornel@em.uni-frankfurt.de



**Thank you very much for your  
attention!**

